



UF424 - 400lb Flake Ice Machine

Self Contained Undercounter Flaker with Storage

UF424 - 400lb Flake Ice Machine



Features and Benefits

Reliability:

- Greaseless bearing for reduced maintenance
- Stainless steel evaporator for maximum durability
- 3 Year parts and labor warranty
- Designed, engineered, assembled in the USA

Ease of Use:

- External air filter for easy cleaning
- Unit specific QR code for quick access to service manuals and warranty history
- Slide back door allows easy access to ice in the bin
- Intuitive control panel allows for quick and easy operation
- Ice scoop and power cord included

Compact Design:

- Only 24" wide, the ice maker can be placed in the tightest locations
- Optional floor mount kit lowers height to 33.5"

High Production:

- Produces up to 440 lb (200 kg) per day and stores 80 lb (36 kg), meeting the ice demands for many different applications

Environmentally Friendly:

- Low Energy Consumption
- Non-ozone depleting R290 refrigerant



Sealed, Maintenance-Free Bearings
Ensure Maximum Reliability and
Contribute to a Long Machine Life



Front Accessible External Air
Filter For Easy Cleaning



24 Hour Volume Production

Air Cooled			Water Cooled		
70°F/21°C 50°F/10°C	Air Water	90°F/32°C 70°F/21°C	70°F/21°C 50°F/10°C	Air Water	90°F/32°C 70°F/21°C
440/200 lb/kg		310/141 lb/kg	479/218 lb/kg		360/164 lb/kg



Flake Ice



Cools more quickly than
other ice forms. Ideal
for use in healthcare,
foodservice and school
applications.



Certification



Warranty

- 3 years parts and labor on all components.
- 5 years parts on the compressor.
- Warranty valid in North, South & Central America for commercial installations.
- Contact factory for warranty in other regions.
- Residential Applications: 1 year parts and labor

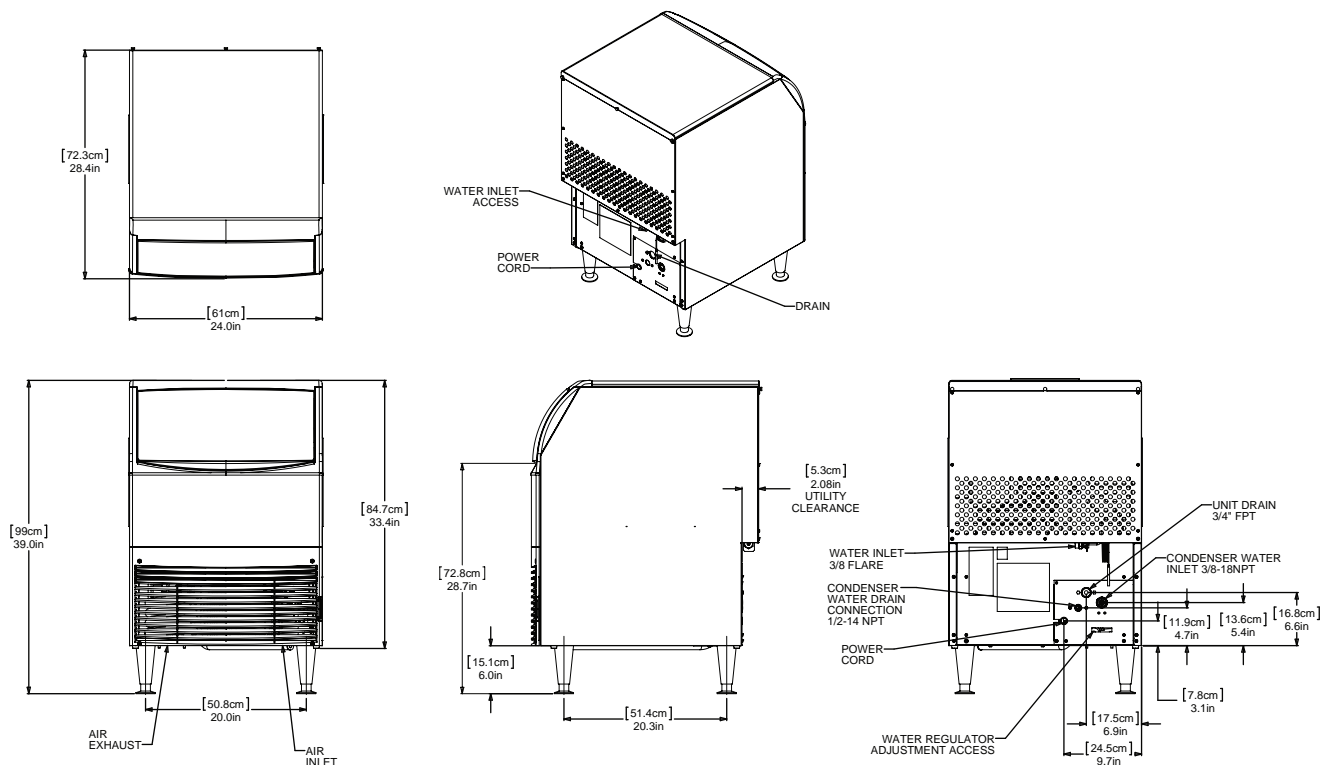
Scotsman®

101 Corporate Woods Parkway, Vernon Hills, IL 60061

1-800-SCOTSMAN | Fax: 847-913-9844 | www.scotsman-ice.com | customer.relations@scotsman-ice.com

UF424 - 400lb Flake Ice Machine

Self Contained Undercounter Flaker with Storage



Specifications

Model Number	Condenser Unit	Storage Capacity lb/kg	Basic Electrical Volts/Hz/Phase	Max. Fuse Size or HACR Circuit Breaker (amps)	Min. Circuit Ampacity	Energy Consumption kWh/100 lb (45.4 kg) 90°F(32°C)/70°F(21°C)	Water Usage Gallons/100 lb (liters/45.4 kg)		Energy Star*
							Potable 90°F(32°C)/70°F(21°C)	Condenser 90°F(32°C)/70°F(21°C)	
UF424AX-1	Air	80/36	115/60/1	15	Cord	4.20	12.0/45.5	-	✓
UF424WX-1	Water	80/36	115/60/1	15	Cord	3.54	12.0/45.5	82.1	



All Models

Dimensions (W x D x H):

Unit: 24" x 28.5" x 39"
(61.0 x 72.4 x 99.1 cm)

Includes 6" (15.24 cm) adjustable legs

Shipping Carton: 28.75" x 38.65" x 39"
(73.0 x 98.2 x 99.1 cm)

Shipping Weight: 200 lb / 91 kg BTUs per hour: 3,000

Model Number	Refrigerant	Refrigerant Charge (oz)
UF424AX-1	R290	5.25
UF424WX-1	R290	4.5



Accessories

Model Number	Description
KLP8S	Kit, Leg 6", Stainless Steel
KBC1	Kit, Casters
KUFM24	Floor mount kit. Lowers height to 33.5"



Operating Requirements

	Minimum	Maximum
Air Temperatures	50°F (10°C)	100°F (38°C)
Water Temperatures	40°F (4.4°C)	100°F (38°C)
Water Pressures	20 PSIG (1.4 bar)	80 PSIG (5.5 bar)
Electrical Voltage	-5%	+10%

Specifications and design are subject to change without notice.
Scotsman recommends all ice machines have water filtration. See Scotsman water filter specification sheet for details.